

## TECHNICAL MANUAL TRACK & SUPPLIES ROD TR20 and TR25

Produit	Chrome steel rod	
Référence	TR20	TR25

Decorative rod in chrome steel available in 2 different diameters

Suitable stitching standard :

- STAN with sewed rings
- TO eyelet

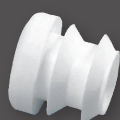
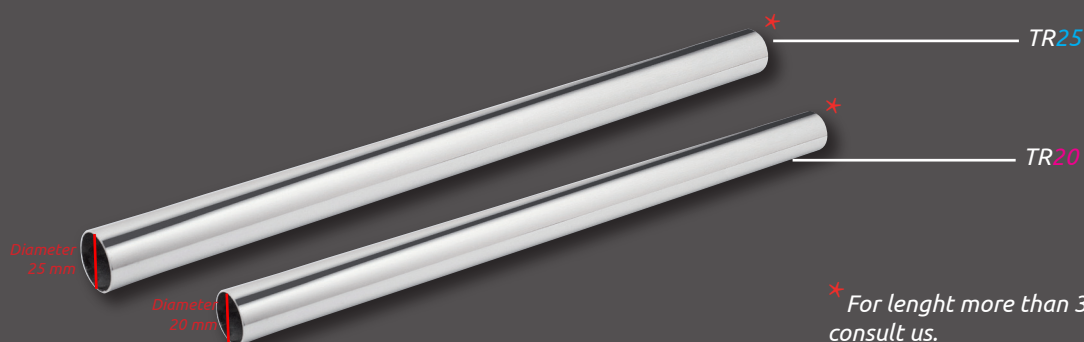
### TECHNICAL INFORMATION : ROD TR20

Size : 20 mm diameter  
Weight : Environ 270 g/ml  
Chrome steel  
Curtain maximum weight : 5 kg

### TECHNICAL INFORMATION : ROD TR25

Size : 25 mm diameter  
Weight : Environ 330 g/ml  
Chrome steel  
Curtain maximum weight : 8Kg

### STANDARD ASSEMBLY :



**White plastic end cap**

Réf.  
LO20BL ou LO25BL



**Ceiling bracket chrome Zamack**

Réf.  
204020 ou 204025



**Wall bracket in nickel plated brass**

Réf.  
203720 ou 203725



**End cap in chrome brass\*\***

Réf.  
203020 ou 203025

\*\* for fixing between 2 walls :  
to provide 2 end cap bracket Réf. 203020 ou 203025 instead of ceiling brackets.

### OPTIONAL ACCESSORIES (only on TR20) :



**Ceiling bracket chrome steel**

Réf. 4083432



**Wall bracket chrome steel**

Réf. 4411432



**Expandable wall bracket chrome steel**

Réf. 446632



**End cap chrome steel**

Réf. 4422432



**Sphere end cap chrome steel**

Réf. 454032